

Rittal – The System.

Faster – better – everywhere.

Digital Brochure

ENCLOSURES

POWER DISTRIBUTION

CLIMATE CONTROL

IT INFRASTRUCTURE

SOFTWARE & SERVICES



Rittal – The System.

Faster – better – everywhere.



System Accessories

Base/Plinth

Flex-Block Base/Plinth System	424
TS Base/Plinth	426
Base/Plinth	433

Base

Base	435
------------	-----

Walls

Sidewalls	450
Partition Walls	453
Interconnect Kit	458

Baying Systems

Baying	460
--------------	-----

Doors/Locks

Door Models	467
Expansion Accessories for TS Modular Front Design	469
Viewing Windows/Operating Panels	473
Lock Systems	478
Hinges	492
Door, External/Internal	493

Roof/Wall Mounting

Roof	499
Wall Mounting	503

Interior Fittings

Mounting Plates	507
Rail Systems	514
Assembly Components	533
Component Shelves	540
System Lights	545
EMC	551
Interior Fittings for Areas at Risk of Earthquake	554
Grounding	555

Cable Routing

Cable Entry	561
Flange Plates	564
Cable Gland	568
Cable Gland	569
Cable Management	572
Cable Routing 19"	582

19" Installation System

Pivoting Frame	587
Accessories for Data Rack	591
Profile Rails	592
Slide Rails	596
19" Fittings	598
Patch Panels	603
Splicing Boxes	604

Human/Machine Interface

Handles	605
External Mounting Accessories	607
Front Fittings	608
Keyboards, Supports and Drawers	610
Interfaces	617
Signal Pillars	619

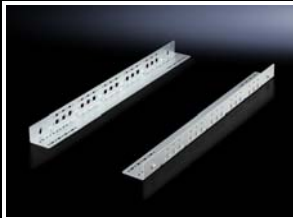
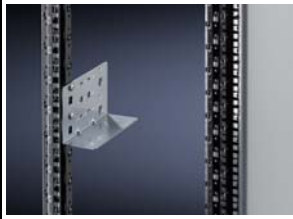
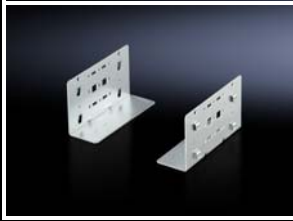
Technical Information

RittalXpress	622
CE/Grounding/HD/Model Numbers	623
Protection Categories	624
NEMA	625
Approvals/Equipment Grounding Conductor	627
Coating/Spray Finish	628



19" Installation System

Slide rails



Slide rails, static installation

for TS IT

For mounting on a 19" mounting level.

- System punchings to mount accessories and ventilate active components

Load capacity:

– 30 kg, static

Material:

– Carbon steel

Surface finish:

– Zinc-plated

Supply includes:

– Assembly components

U	Length inches (mm)	Packs of	Model No.
2	6 (150)	2 pc(s).	5501.400

Slide rails, static installation

for TS IT

Mounted between front and rear mounting levels.

- To support heavy installed equipment
- Side system punchings to mount accessories and ventilate active components that exhaust air from the side
- Simply attach to the system punchings of the TS IT

Load capacity:

– 80 kg, static

Material:

– Carbon steel

Surface finish:

– Zinc-plated

Supply includes:

– Assembly components

Note:

– Effective contact surface 35 mm per side

U	19" clearance between levels inches (mm)	Packs of	Model No.
1	14 (345)	2 pc(s).	5501.410
1	18 (445)	2 pc(s).	5501.420
1	21 (545)	2 pc(s).	5501.430
1	25 (645)	2 pc(s).	5501.440
1	29 (745)	2 pc(s).	5501.450

Slide rails, depth-variable

19" (482.6 mm)

for TS IT

Mounted between front and rear mounting levels. Side attachment to the front profile means all three mounting holes in the EIA system punchings are available for screw-fastening the equipment.

- To support heavy installed equipment
- To adapt to individual distances between levels
- Tool-free, time-saving one-person assembly from the front of the enclosure
- All three mounting holes in the EIA system punchings are available for screw-fastening the equipment
- Alternatively, direct attachment to the 19" (482.6 mm) system punchings is also possible

19" clearance between levels inches (mm)	Load capacity lb (kg)	Packs of	Model No.
16 – 24 (400 – 600)	176 (80)	2 pc(s).	5501.460
24 – 35 (600 – 900)	331 (150)	2 pc(s).	5501.480

Material:

– Carbon steel

Surface finish:

– Zinc-plated

Supply includes:

– Assembly components

Note:

– Effective contact surface 25 mm per side

Slide rails

PDU button mount brackets

Enables the tool-free installation of PDUs.
Zero-U mounting of PDU is possible.

Material:

- Carbon steel

Surface finish:

- Primed

Color:

- Black

Supply includes:

- Assembly components

Description	Packs of	Model No.
Zero-U, two mounts	2 pc(s).	9971.067
Zero-U, recessed, two mounts	2 pc(s).	9963.800



Telescopic support rail

Heavy duty

This telescopic support rail is used to support heavy installed equipment. Rail length 560.5 mm when completely retracted, up to 762 mm when completely extended.

Load capacity:

- 200 lb (91 kg) per set

Supply includes:

- 2 support rails

Packs of	Model No.
2 pc(s).	9963.499



Slide rails

for TS adapter profile

With two-sided mounting between the front and rear adapter profiles, 19" (482.6 mm), or adapter pieces, 19" (482.6 mm).

Material:

- Carbon steel

Surface finish:

- Zinc-plated

Supply includes:

- Assembly components

For enclosure depth inches (mm)	Packs of	Model No.
20 (500)	10 pc(s).	8613.150
24 (600)	10 pc(s).	8613.160
32 (800)	10 pc(s).	8613.180



Also required:

- Adapter profile, 19" (482.6 mm), see page 592 or
- Adapter pieces, 19" (482.6 mm), see page 593



Slide rails

for TS adapter profile

With one-sided mounting on the 19" (482.6 mm) adapter profiles.

Material:

- Carbon steel

Surface finish:

- Zinc-plated

Supply includes:

- Assembly components

Length inches (mm)	Packs of	Model No.
11 (270)	10 pc(s).	4531.000



Also required:

- Adapter profile, 19" (482.6 mm), see page 592

